



ARLEY
HALL & GARDENS

30th
GARDEN
Festival

Sponsorship Proposal Packages
28th & 29th June 2025



In 2025, we will celebrate the 30th anniversary of our annual Garden Festival—our largest event that attracts over 4,000 visitors each year. Attendees come to enjoy inspiring talks, countryside demonstrations, fabulous food vendors, and, new this year, our Creative Corners garden designing. This anniversary festival promises to be a vibrant celebration of everything Arley has to offer, highlighting our rich history, diverse plant life, and the heritage of the estate.

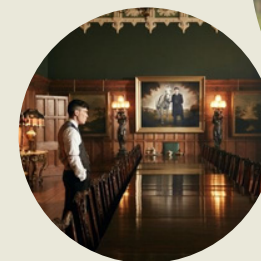
Support through sponsorship is invaluable to us, as it allows us to invest in the festival and create an even more memorable experience. In past years, sponsorship has enabled us to enhance our catering facilities, including the introduction of a new food and refreshments marquee and investment into our wifi to ensure coverage of the whole site. With your partnership, we can ensure that the Garden Festival continues to be a cherished tradition for years to come.

Lord and Lady Ashbrook deeply appreciate all the support for this event, which is very close to their hearts. We sincerely hope you will consider joining us in supporting the Arley Estate and this momentous anniversary celebration.

About Arley

Arley Hall (listed Grade II) is one of the most interesting and attractive stately homes in the North West. Visiting will give you an intimate insight into life in The Hall and the history of a family that has cherished Arley as their home for over 550 years. The gardens are award winning, having been developed over the last 270 years by successive generations of the same family.

Arley is also an ever popular filming location. The Hall and Gardens have provided the stage for many TV productions including Peaky Blinders, Fool Me Once, Hollyoaks, The Voice, Cold Feet, Coronation Street and Evermoor from the Disney Channel!



The Garden Festival

Our Garden Festival is hugely enjoyed by all the visitors who greatly appreciate the friendly and intimate atmosphere. We have dedicated plant nurseries and high quality accessory traders, as well as experts on hand from the Professional Gardener's Guild.

2024

- New for 2024 we welcomed the Fun Dog Show, which was a roaring success and will be returning next year, with all the proceeds going to Tails Animal Rescue.
- We welcomed a record number of schools to compete in our School's Gardening Challenge.

2025

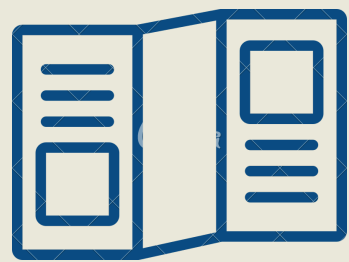
- New for 2025 is our Creative Corners Gardening Challenge. Providing an opportunity for nurseries and horticultural colleges to develop their talents as a necessary stepping stone to the RHS shows in the future.



Statistics



2024 saw
4,000+ visitors



10,000

Flyers Printed



2,000

Festival Programmes



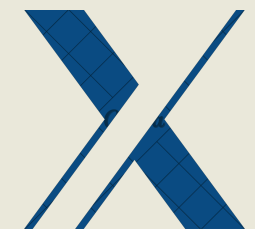
26K+ Followers



12K+ Followers



Mailing list
of 10K+



9K+ Followers



Key Benefits of becoming a Gold Sponsor for the 30th Garden Festival:

- One day use of the Olympia Conference Centre on a day Delegate Package for up to 24.
- Afternoon Tea for 6 people served in the Library at Arley Hall to be used in 2025.
- Full outside back cover colour advertisement in the official programme.
- Logo to be featured on Patron's page in the official programme.
- Company branding and description on the Arley Garden Festival web page.
- A space at the main entrance for your own banners.
- 40 Free Admission Tickets and VIP car park passes.

£1,600 + VAT



Key Benefits of becoming a Silver Sponsor for the 30th Garden Festival:

- Afternoon Tea for 4 people served in the library at Arley Hall to be used in 2025.
- Full page colour advertisement in the official programme.
- Logo to be featured on the Patron's page in the official programme.
- A space within the festival for your own banner.
- 20 Free Admission Tickets plus VIP parking passes

£800 + VAT



Key Benefits of becoming a Bronze Sponsor for the 30th Garden Festival:

- Afternoon Tea for 2 people served in the library at Arley Hall to be used in 2025.
- Full page colour advertisement in the official programme.
- Logo on Patron's page in the official programme.
- A space within the festival for your own banner.
- 10 Free Admission Tickets plus VIP parking passes.

£400 + VAT



£100 + VAT

Benefits of becoming a programme sponsor for the 30th Garden Festival:

- A half-page colour advertisement in the official Garden Festival programme.
- 2 Free Admission Tickets



Alternative opportunities including sponsorship of areas of the festival ground or bespoke packages are available upon request.

For more information get in touch with Chloe Littler on **01565 777 353** or email **chloe.littler@arleyhallandgardens.com**



As part of the Garden Festival we invite you to engage with our community through **in-kind sponsorship**. This is a fantastic way to show your commitment while contributing to the success of the festival.

Benefits of in-kind sponsorship for the 30th Garden Festival:

- Community impact
- Acknowledgement of your contribution to the festival in the programme, on the festival ground and in promotional social media material.
- A space within the festival for your own banner.



If you are interested in being supporting our garden festival through in-kind sponsorship please get in contact with Chloe Littler on **01565 777 353** or email **chloe.littler@arleyhallandgardens.com**



ARLEY

HALL & GARDENS

**If you would like to be a sponsor of our show or discuss
any options,**

please contact Chloe Littler on 01565 777353

or email

chloe.littler@arleyhallandgardens.com

**ARLEY HALL & GARDENS
NORTHWICH
CHESHIRE
CW9 6NA**

www.arleyhallandgardens.com

CONTACT US ON: 01565 777 353



/arleyhall



[arleyhallandgardens](https://www.instagram.com/arleyhallandgardens)

VisitEngland



QUALITY ASSURED
VISITOR
ATTRACTION