



ARLEY
~ WEDDINGS ~



LET ARLEY HALL BE YOUR HOME FOR THE DAY

If you are looking for a venue with enormous character, charm and interest for your wedding, then we believe Arley is right for you.

It is a special place. A place that combines grandeur with a warm and intimate atmosphere that will be obvious to you and your guests on the big day.

Arley is a much-loved and cherished family home set in breathtaking Cheshire countryside with gardens that look beautiful in all seasons.

The hall is an impressive example of a Victorian

country house built in Elizabethan style and one of the most interesting and attractive stately homes in the country.

Every room tells a story and you can be a part of Arley's history if you choose to host your wedding here.

The lavish ceilings, elaborate carvings, plasterwork and stained glass windows provide impressive backdrops at every stage of your day and for those all-important photographs.

Historic splendour and magical gardens are not the only reason Arley Hall is one of the finest venues in Cheshire for civil ceremonies and wedding receptions. The main attraction is that the Hall is exclusively yours for your special day!

We thoroughly believe Arley is a special place that provides the perfect wedding venue all year round. We hope you agree.



OUR GLORIOUS GARDENS

The 18 acres of award-winning gardens provide a beautiful backdrop for photographs. Whatever the season the gardens have something magical to offer from the stunning double herbaceous border in the summer to the impressive Ilex Avenue; you will be spoilt for choice.

'Mariage pluvieux, mariage heureux'



PERFECT VENUE

Arley Hall and Gardens is a venue which can be tailored to meet your needs providing you with an intimate setting that is yours to enjoy for the day.

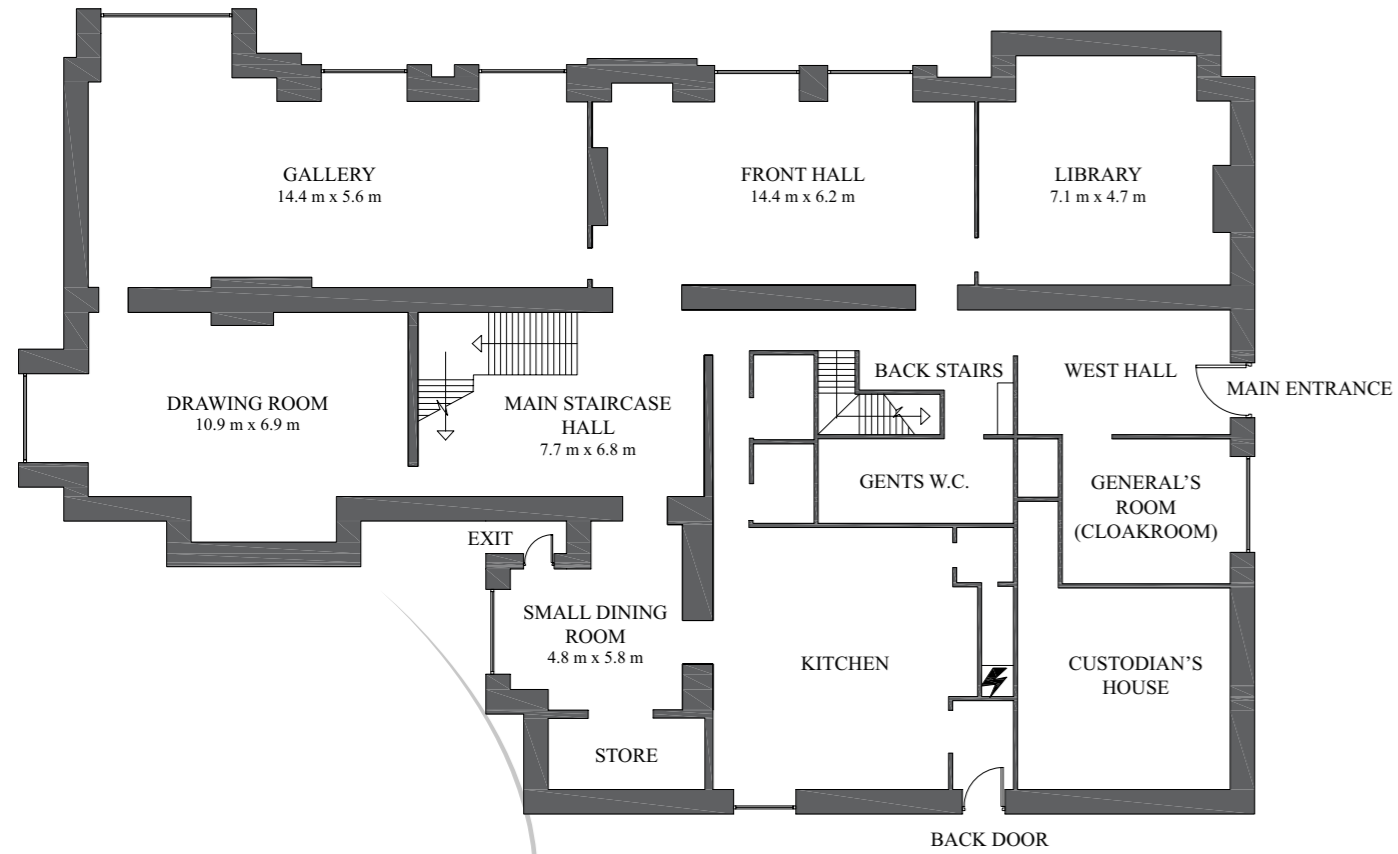
Our dedicated team will be only too happy to meet your requirements and help with the preparations from recommending a DJ to suggesting a florist we feel would create the most exquisite and fitting floral arrangements.

Choosing Arley will mean you will find yourself in the heart of beautiful Cheshire countryside, surrounded by wonderful gardens with the use of a beautiful stately home on your wedding day.

What's more, we will work with you to ensure your ideas are turned into reality... we really can make your dream wedding come true.



Arley Hall



CIVIL CEREMONIES

Should you wish to hold a civil ceremony at Arley Hall and Gardens, we hold a licence to conduct civil and partnership ceremonies in the following rooms:

- Front Hall - capacity 80 persons
- Drawing Room - capacity 100 persons
- Library - capacity 30 persons
- Warburton Room - capacity 100 persons
- The Hayloft - capacity 60 persons

Please contact the Cheshire East registrar for further details on civil ceremonies - 01270 375138





OUTDOOR CEREMONIES

Arley is pleased to be able to offer weddings in the breathtaking gardens.

The Alcove, which sits at the end of the stunning double herbaceous border, is licensed for civil marriages and partnership ceremonies and provides the perfect backdrop for an outdoor wedding.

Should the weather prove inclement, your ceremony can take place in Arley Hall.



ST MARY'S CHAPEL, ARLEY

There is a private family chapel on the estate. Whilst this is not consecrated for weddings, it is possible to hold a blessing in the chapel subject to the consent of Lord and Lady Ashbrook.

to have and to hold





THE WEDDING BREAKFAST

The Gallery is the largest room within the hall and provides the perfect setting for the wedding breakfast with its magnificent fireplace and wonderful views over the historic park.

Our caterers are able to offer a truly individual service. Bringing together a leading team of professionals they can assist at every stage from menu ideas to cooking at your home allowing you to sample your chosen menu before the big day. We can accommodate up to 160 over two rooms (the Gallery and the Drawing Room) for a wedding breakfast only should this be appropriate.





OLYMPIA

Dancing takes place in Olympia, our renovated Victorian barn just off the stable yard. The barn has a main room with exposed beams, air conditioning and sound system together with a separate bar overlooking a private courtyard, complete with fountain, lit trees and giant parasols.



WE DO NOT BELIEVE IN HIDDEN EXTRAS

We do not believe in hidden extras, and thus our wedding package includes:

- Exclusive use of the ground floor of Arley Hall for a civil marriage or partnership ceremony, cocktail reception and wedding breakfast
- Exclusive use of the Olympia Barn for an evening reception
- Exclusive use of a private Bridal Room, for the bridal party to prepare at their leisure and perhaps enjoy a glass of Champagne
- The services of our in-house Master of Ceremonies
- All the tables and chairs you require

- Use of the sound system, screen and projector within the Hall and Olympia
- Access to our award-winning gardens for photographs
- Free parking for all your guests
- A comprehensive suppliers list from photographers and florists to jazz and string quartets.

We can help stage your grand arrival – whether driving across the beautiful park, down the pleached lime avenue or dropping in by helicopter... the choice is yours. We can also take care of the little things – table name holders, an easel for the table

plan, and silver cake stand and knife.

We would love to show you around the hall and gardens. If you wish to visit, please telephone the events team on 01565 777353 to make an appointment.

The office is open from 9.00am to 5.00pm, Monday to Friday.

We look forward to welcoming you to Arley.

Please note that Arley Hall and Gardens is a visitor attraction. It is therefore open to the public and other activities may coincide with the time of hire.



HOW TO FIND US

Arley Hall is just 10 minutes from the M56 and M6, approximately 6 miles from Northwich and Knutsford and 3 miles from High Legh.

We are only 20 minutes from Manchester Airport.



'It is really difficult to know where to start when such a magical, wonderful day has occurred but we must thank you all so much for making it possible. Arley Hall is surely one of the finest locations to hold a wedding reception and being the mother and father of the bride, our only child it was, and will always be, the best day of our lives when every dream for our beloved daughter came true. Thank you.'

Jean & John

'Everybody at Arley was amazing throughout the entire process – we couldn't have asked for more! So many of our guests have commented how fantastic the Arley staff were on the day.'

Laura & Gabriel

'Nearly every guest that we spoke to said what a tremendous location it was, how warm and friendly it was and how helpful and courteous all the staff were. There was praise from everyone for the quality of the food, the attentiveness of the waiting staff and the efficiency of the service.'

Marian & David

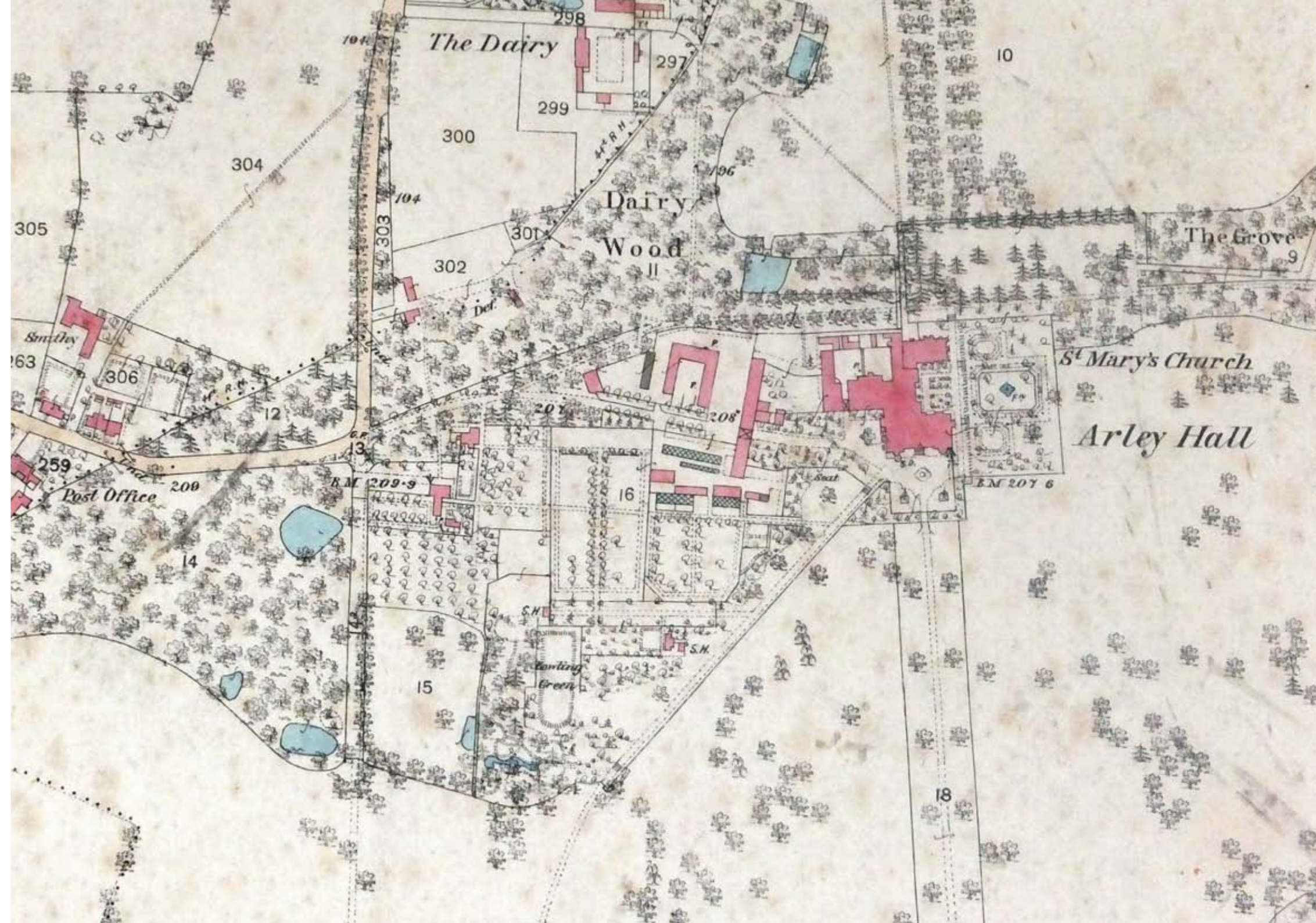
'I wanted to thank you and your colleagues for helping make my daughter's wedding simply outstanding. The Hall looked and felt stunning as was appreciated by the guests who were attending from all over the world.'

Paul



don't just take our word for it







Arley Hall & Gardens ♦ Northwich ♦ Cheshire ♦ CW9 6NA
01565 777353 ♦ events@arleyhallandgardens.com ♦ www.arleyhallandgardens.com